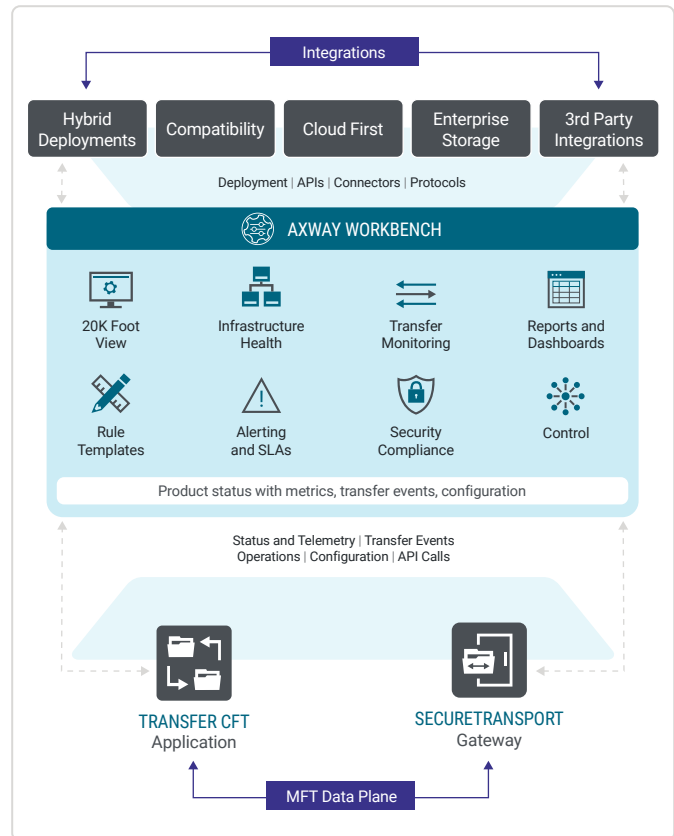


Axway Workbench

Gain centralized visibility, insight, and control across Axway MFT environments

Complete visibility into MFT operational health, security, and performance SLAs is crucial to business operations. Axway Workbench provides centralized ecosystem-wide visibility, transfer observability, and operational control across all Axway MFT products with:

- **Health monitoring of SecureTransport and Transfer CFT installations.** Gain a consolidated view of system resource usages, application queues, and service/daemon statuses, including the ability to restart down processes.
- **Complete file tracking.** Track files across your entire ecosystem of multiple SecureTransport and Transfer CFT instances, instead of one instance at a time.
- **Operational management.** Automate alerts for risk of SLA breach, compliance drift, and unusual user behavior. Be notified by email, Microsoft Teams, and ServiceNow.
- **Out-of-the-box dashboards.** Monitor operations, business analysis, and reporting by setting up ready-to-play dashboards with no programming or special graphics expertise.



Workbench lets you see and control everything across the full scope of your Axway MFT operations.

AXWAY WORKBENCH BENEFITS

- Simplified MFT administration with a modern UX and single point of control
- Faster, proactive problem identification and resolution
- Improved performance vs. SLAs
- Optimized usage and operational health
- Stronger security
- Fast learning curve and time to value

Driving value for all MFT stakeholders

IT Operations. Visualize system health and detect or be notified about degraded and problematic SecureTransport or Transfer CFT instances quickly. Where problems arise, Workbench allows for further triage and interactive restarts of daemons/services.

C-Suite. Out-of-the-box dashboards display file transfer metrics per day/month/year. Be proactive with actionable insights into trends, statistics, and SLA drifts impacting business.

MFT Operations. Track individual files through the MFT eco-system (end-to-end) with automated notification of anomalies, failed transfers, SLA breaches. Monitor system health with consolidated view of all SecureTransport and Transfer CFT instances.

Security Team. Gain visibility and observability with immediate notifications for drift monitoring, security compliance reports, and SLA monitoring for compliance purposes.

AXWAY WORKBENCH KEY CAPABILITIES AND FEATURES

Visibility

- Centralized product health dashboards
- Performance metrics
- Consolidated view of files and transfer status across all Secure Transport and Transfer CFT instances

Observability

- End-to-end file tracking with embedded transfer actions (drill-down and troubleshooting)
- User activity reporting
- Prebuilt alerting templates for nonevents and missing SLAs
- Multi-channel alerting and notifications with Email (SMTP), Microsoft Teams, ServiceNow

Operations management

- File transfer KPI and error dashboards
- Start/stop/update actions on MFT products
- Configurations drift and security compliance views
- Self-service capabilities and segregation of duties through granular access rights
- API support for custom integrations

The screenshot displays the Axway Workbench interface. On the left is a navigation sidebar with options like Home, Transfers, Products, Automation, Users, and Dashboard. The main content area is titled 'Product Health' and includes a search bar, filters for Products, Product Type, Environment, OS, and Version. It features several charts: 'SecureTransport' with a hexagonal status indicator, 'Transfer CFT' with a hexagonal grid, 'External Connections' with a 'Total Connections' line chart, and 'Logons by Protocol' with area charts for SFTP, FTPS, HTTPS, and AS2. On the right, a 'Create New Automation' panel offers a grid of templates such as 'Detect Missing Transfers', 'Detect Incorrect Files Count', 'Detect Duplicate Files', 'Negative Ack Received', 'Notify of Transfer Status', 'Notify of File Delivered', 'File Size Mismatch', 'No File Received Since', and 'Notify of File Arrival'.

Workbench out-of-the-box dashboards provide a consolidated view of product health.

Ready to take MFT to the next level of visibility and control?

Start Here